



Customer information packet

XM32362T

30//25HP, 1180//980RPM, 3PH, 60//50HZ, 326T

Class - CLI GP D; CLII GP F,G

Division - Division I

Specifications

Enclosure	XPFC
Frame	326T
Frame Material	Iron
Frequency	50.00 Hz 60.00 Hz
Motor Letter Type	Three Phase
Output @ Frequency	25.000 HP @ 50 HZ 30.000 HP @ 60 HZ
Phase	3
Synchronous Speed @ Frequency	1200 RPM @ 50 HZ
Voltage @ Frequency	460.0 V @ 60 HZ 380.0 V @ 50 HZ 230.0 V @ 60 HZ 190.0 V @ 50 HZ
XP Class and Group	CLI GP D; CLII GP F,G
XP Division	Division I
Agency Approvals	CSA EEV UL
Ambient Temperature	40 °C
Auxillary Box	No Auxillary Box
Auxillary Box Lead Termination	None
Base Indicator	Rigid
Bearing Grease Type	Polyrex EM (-20F +300F)
Blower	None
Constant Torque Speed Range	6
Current @ Voltage	78.000 A @ 230.0 V 39.000 A @ 460.0 V
Design Code	A
Drip Cover	No Drip Cover
Duty Rating	CONT
Efficiency @ 100% Load	93.0 %
Electrically Isolated Bearing	Not Electrically Isolated

Part detail

Revision	A
Type	AC
Mech. spec.	
Base	
Status	PRD/A
Elec. spec.	12WGY812
Layout	12LYL018
Eff. date	09-15-2022
CD Diagram	CD0005
Poles	06
Leads	9#8
Proprietary	False
Created date	03-23-2021

Feedback Device	NO FEEDBACK
Heater Indicator	No Heater
High Voltage Full Load Amps	39.0 a
Insulation Class	F
Inverter Code	Inverter Duty
IP Rating	NONE
KVA Code	H
Lifting Lugs	Standard Lifting Lugs
Locked Bearing Indicator	Locked Bearing
Max Speed	1800 rpm
Motor Lead Termination	Flying Leads
Motor Standards	NEMA
Motor Type	1264M
Mounting Arrangement	F1
Number of Poles	6
Overall Length	32.00 IN
Power Factor	78
Product Family	Hazardous Location Motor
Pulley Face Code	Standard
Rodent Screen	None
Service Factor	1.00
Shaft Diameter	2.125 IN
Shaft Ground Indicator	No Shaft Grounding
Shaft Rotation	Reversible
Speed	1180 rpm
Speed Code	Single Speed
Starting Method	Direct on line
Thermal Device - Bearing	None
Thermal Device - Winding	Normally Closed Thermostat
Vibration Sensor Indicator	No Vibration Sensor
Winding Thermal 1	None
Winding Thermal 2	None
XP Temp Code	T3C

Nameplate

NP0887XPSLEV

NO.		CC	010A		
S/N		TEMP CODE	T3C		
SPEC.	12-0000-2082	INV.TYPE	PWM		
CAT.NO.	XM32362T	C HP FR	60	C HP TO	90
HP	30//25	CT HZ FROM	6	CT HZ TO	60
VOLTS	230/460//190/380	VT HZ FROM	6	VT HZ TO	60
AMPS	78/39	MAG CUR	34.4/17.2		
RPM	1180//980	MX RPM	1800		
HZ	60//50	PH	3	CL	F
		NOM.EFF.	93		
SER.F.	1.00	DES	A	SL HZ	1
		WK2	12.2		
FRAME	326T	RATING	40C AMB-CONT		
	NEMA MG-1 PART 5, IP54				
	1.15 SF ON SINE WAVE				

Parts list

Part number	Description	Quantity
SA392537	SA 12-0000-2082	1.000 ea
RA383103	RA 12-0000-2082	1.000 ea
LC0005E01	SPL CONN.DIA./WARN.LABEL(LC0005/LB1119)	1.000 ea
NP0887XPSLEV	SS XP INV UL CSA-EEV CC CL-I GP-D	1.000 ea
85XU0407S04	4X1/4 U DRIVE PIN STAINLESS	4.000 ea
85XU0407S04	4X1/4 U DRIVE PIN STAINLESS	2.000 ea
MN416A01	TAG-INSTAL-MAINT no wire (2100bx)4/22	1.000 ea
LB1073	ALUM XP CAUTION LABEL	1.000 ea
12FH1001A01	FAN HOUSING 312 EXPLOSION PROOF MOTORS	1.000 ea
HW1001A31	LOCKWASHER 5/16, ZINC PLT.591 OD, .319 I	3.000 ea
10XN3118K12	5/16-18 X .75 GRADE 5, ZINC PLATED	3.000 ea
09FN3001B03SP	EXTERNAL FAN, PLASTIC (COMES W/SCREW FRO	1.000 ea
HW2500A25	WOODRUFF KEY USA #1008 #BLOW CARBON STEE	1.000 ea
MJ1000A02	GREASE, POLYREX EM EXXON	0.200 lb
12EP1705A01	ENDPLATE, MACH. 312 - EXPLOSION PROOF 31	1.000 ea
HA3051A03	1/2-13X2.75 BLT GR8 1.75 TO E NC F/S	4.000 ea
HW1001A50	LOCKWASHER 1/2, ZINC PLT,.879 OD, .509 I	4.000 ea
HW5100A13	W4627-047 WVY WSHER	1.000 ea
HW4500A20	1/8NPT SL PIPE PLUG	1.000 ea
HW4500A20	1/8NPT SL PIPE PLUG	1.000 ea
12EP1706A01	ENDPLATE, MACH. 312 - EXPLOSION PROOF 31	1.000 ea
HW1001A50	LOCKWASHER 1/2, ZINC PLT,.879 OD, .509 I	4.000 ea
HA3051A03	1/2-13X2.75 BLT GR8 1.75 TO E NC F/S	4.000 ea
10XN3118K40	5/16-18 X 2.75" HEX HD, GRADE 5	4.000 ea
HW1001A31	LOCKWASHER 5/16, ZINC PLT.591 OD, .319 I	4.000 ea
HW4500A20	1/8NPT SL PIPE PLUG	1.000 ea
HW4500A20	1/8NPT SL PIPE PLUG	1.000 ea
12CB1001A01	K.O.BOX, MACH X-PROOF, 1.50 NPT HOLE	1.000 ea
10XN3118K16	5/16-18 X 1' GRADE #5, STL, ZINC PLATE	4.000 ea
HW1001A31	LOCKWASHER 5/16, ZINC PLT.591 OD, .319 I	4.000 ea
WD1000B25	GND LUG, BURNDY L125HP OR T&B L125HP-BB	1.000 ea

19XW3118G08	.31-18X.50,HEX WSHR HD,TAPTITE 2,GREEN	1.000 ea
12CB1501A01	COND.BOX LID, MACH., X-PROOF, 310,312	1.000 ea
10XN3816K20	3/8-16 X 1.25 HEX HD CAP GRADE 5	6.000 ea
HW1001A38	LOCKWASHER 3/8, ZINC PLT .688 OD, .382 I	6.000 ea
MG1025G29	WILKOFAS, 789.229, DARK CHARCOAL GRAY	0.125 ga
14PA1000	PACKAGING 314 GROUP COMBINED PRINT	1.000 ea
HW2501H33	KEY, 1/2 SQ X 3.875	1.000 ea
LB1624	COMBINED WARNING LABEL, ISO/ANSI PICTOGR	1.000 ea

AC Induction Motor Performance Data

Record # 67041

Typical performance - not guaranteed values

Winding: 12WGY812-R015		Type: 1264M	Enclosure: XPFC	
Nameplate Data			460 V, 60 Hz: High Voltage Connection	
Rated Output (HP)	30	Full Load Torque	133 LB-FT	
Volts	230/460	Start Configuration	direct on line	
Full Load Amps	78/39	Breakdown Torque	370 LB-FT	
R.P.M.	1180	Pull-up Torque	179 LB-FT	
Hz	60	Locked-rotor Torque	217 LB-FT	
NEMA Design Code	A	Starting Current	245 A	
Service Factor (S.F.)	1	No-load Current	17.2 A	
NEMA Nom. Eff.	93	Line-line Res. @ 25°C	0.22799 Ω	
Rating - Duty	40C AMB-CONT	Temp. Rise @ Rated Load	56°C	
		Locked-rotor Power Factor	27.6	

Load Characteristics 460 V, 60 Hz, 30 HP

% of Rated Load	25	50	75	100	125	150
Power Factor	42	63	73	78	80	80
Efficiency	89	92.7	93.4	93.1	92.4	91.4
Speed	1196.5	1191.9	1188.3	1183.2	1178.2	1171.8
Line amperes	19.2	24.1	31	38.7	47.5	57.3

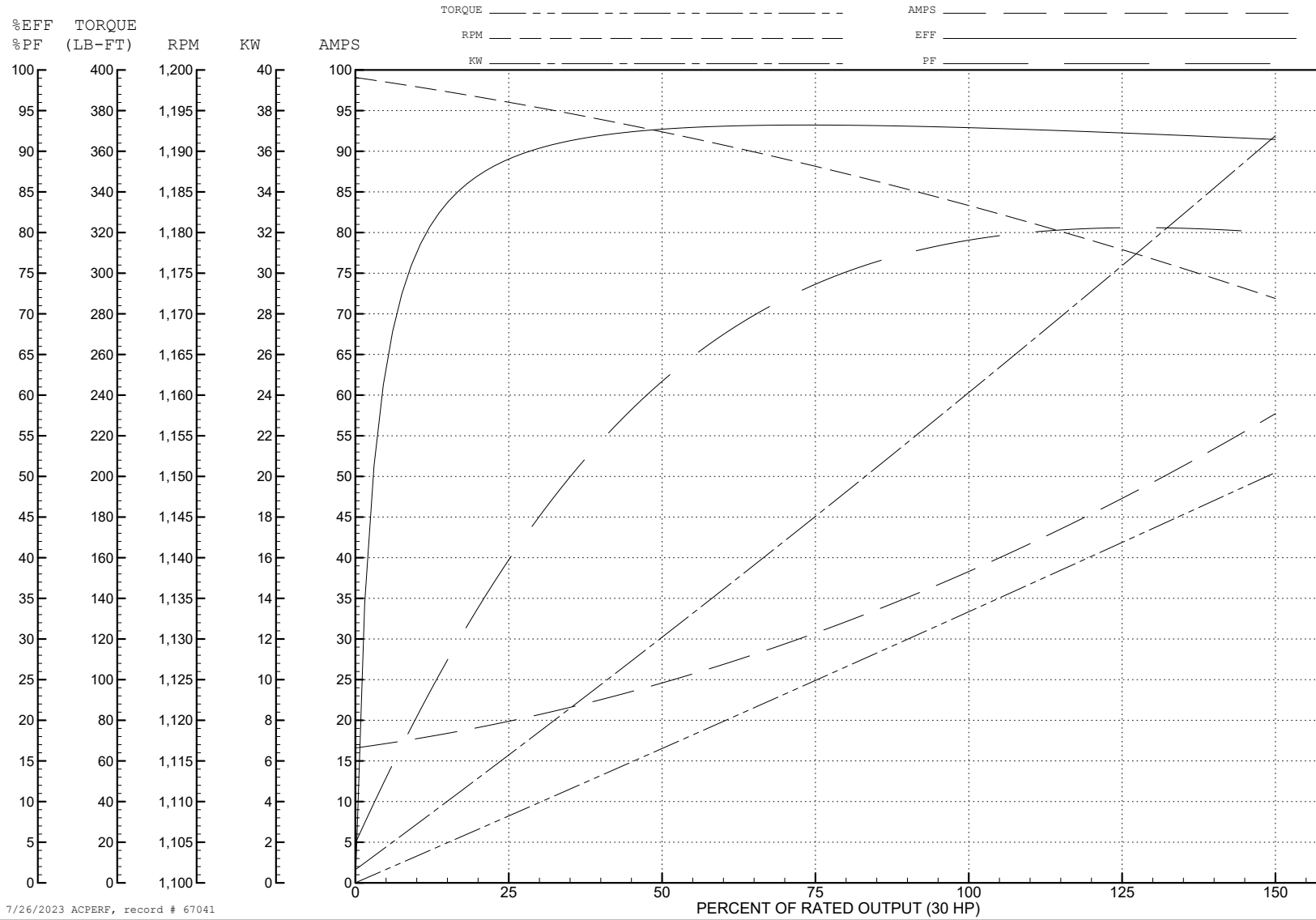
ABB Motors and Mechanical Inc.

WINDING # 12WGY812

30 HP 3 PH 60 HZ 1180 RPM 460 V 1264M

Typical performance - not guaranteed values.

TORQUES (LB-FT): PO=370 PU=179 LR=217 LRA=245



7/26/2023 ACPERF, record # 67041

AC Induction Motor Performance Data

Record # 75682

Typical performance - not guaranteed values

Winding: 12WGY812-R018		Type: 1264M	Enclosure: XPFC	
Nameplate Data			380 V, 50 Hz: High Voltage Connection	
Rated Output (HP)	30//25	Full Load Torque	133 LB-FT	
Volts	230/460//190/380	Start Configuration	direct on line	
Full Load Amps	78/39	Breakdown Torque	358 LB-FT	
R.P.M.	1180//980	Pull-up Torque	187 LB-FT	
Hz	60//50 Phase	Locked-rotor Torque	227 LB-FT	
NEMA Design Code	A KVA Code	Starting Current	239 A	
Service Factor (S.F.)	1	No-load Current	16.97 A	
NEMA Nom. Eff.	93 Power Factor	Line-line Res. @ 25°C	0.222 Ω	
Rating - Duty	40C AMB-CONT	Temp. Rise @ Rated Load	56°C	
S.F. Amps		Temp. Rise @ S.F. Load	69°C	
		Locked-rotor Power Factor	30.7	
		Rotor inertia	12.2 LB-FT ²	

Load Characteristics 380 V, 50 Hz, 25 HP

% of Rated Load	25	50	75	100	125	150
Power Factor	42	64	74	79	80	81
Efficiency	89.3	92.6	93.1	92.3	91.9	90.6
Speed	996	992	988	984	979	972
Line amperes	18.98	23.98	31.07	38.94	48.02	58.14

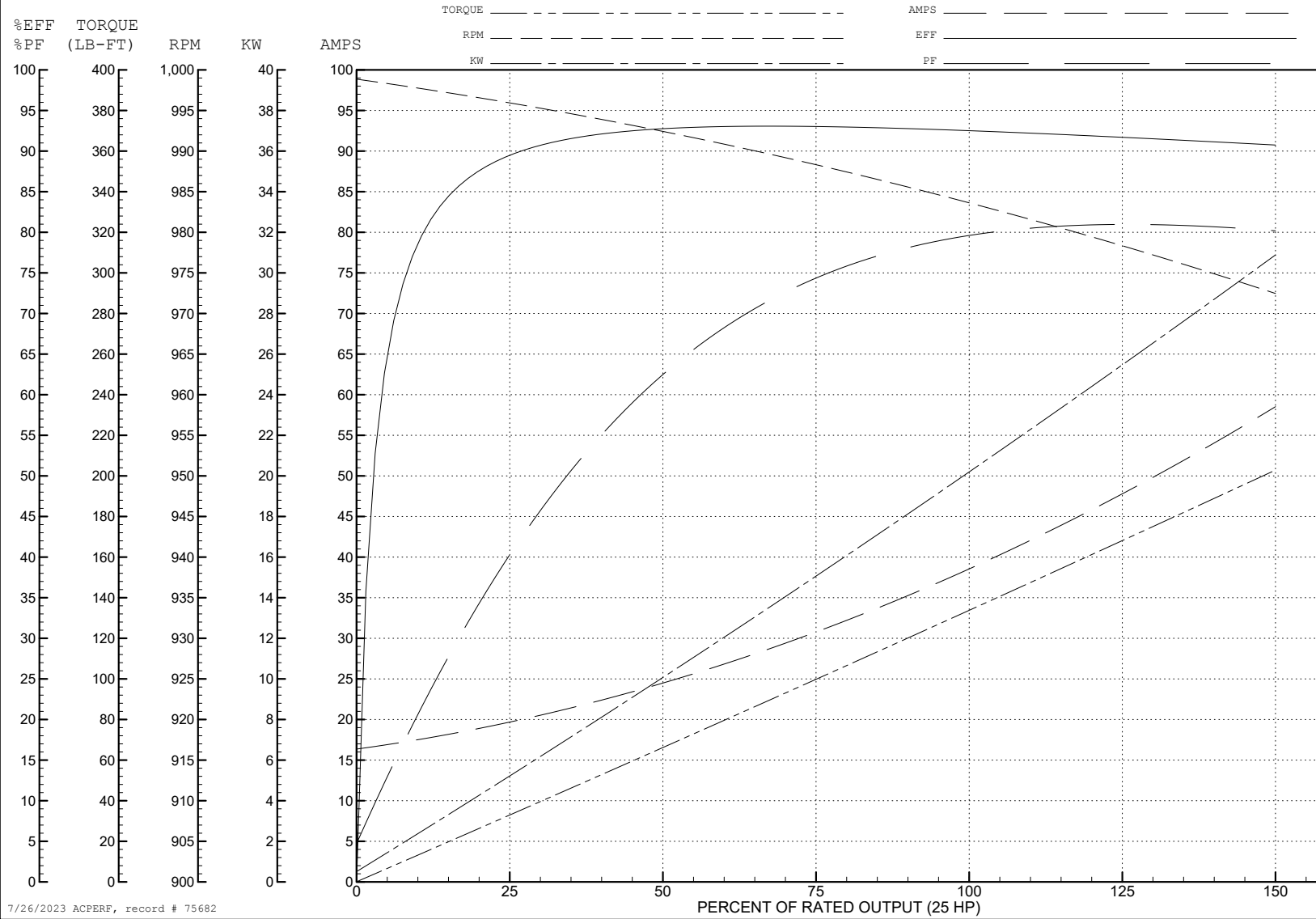
ABB Motors and Mechanical Inc.

WINDING # 12WGY812

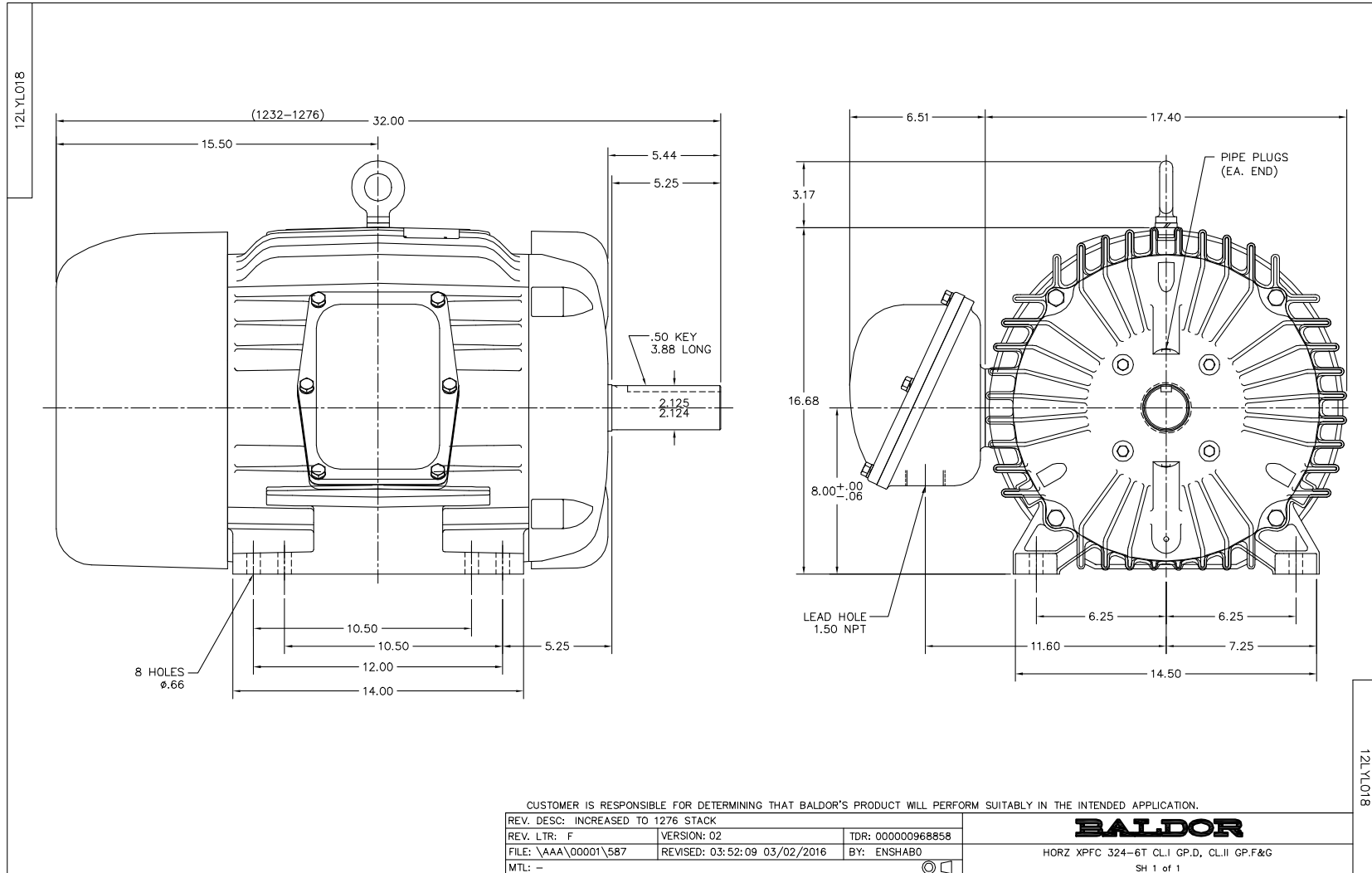
25 HP 3 PH 50 HZ 984 RPM 380 V 1264M

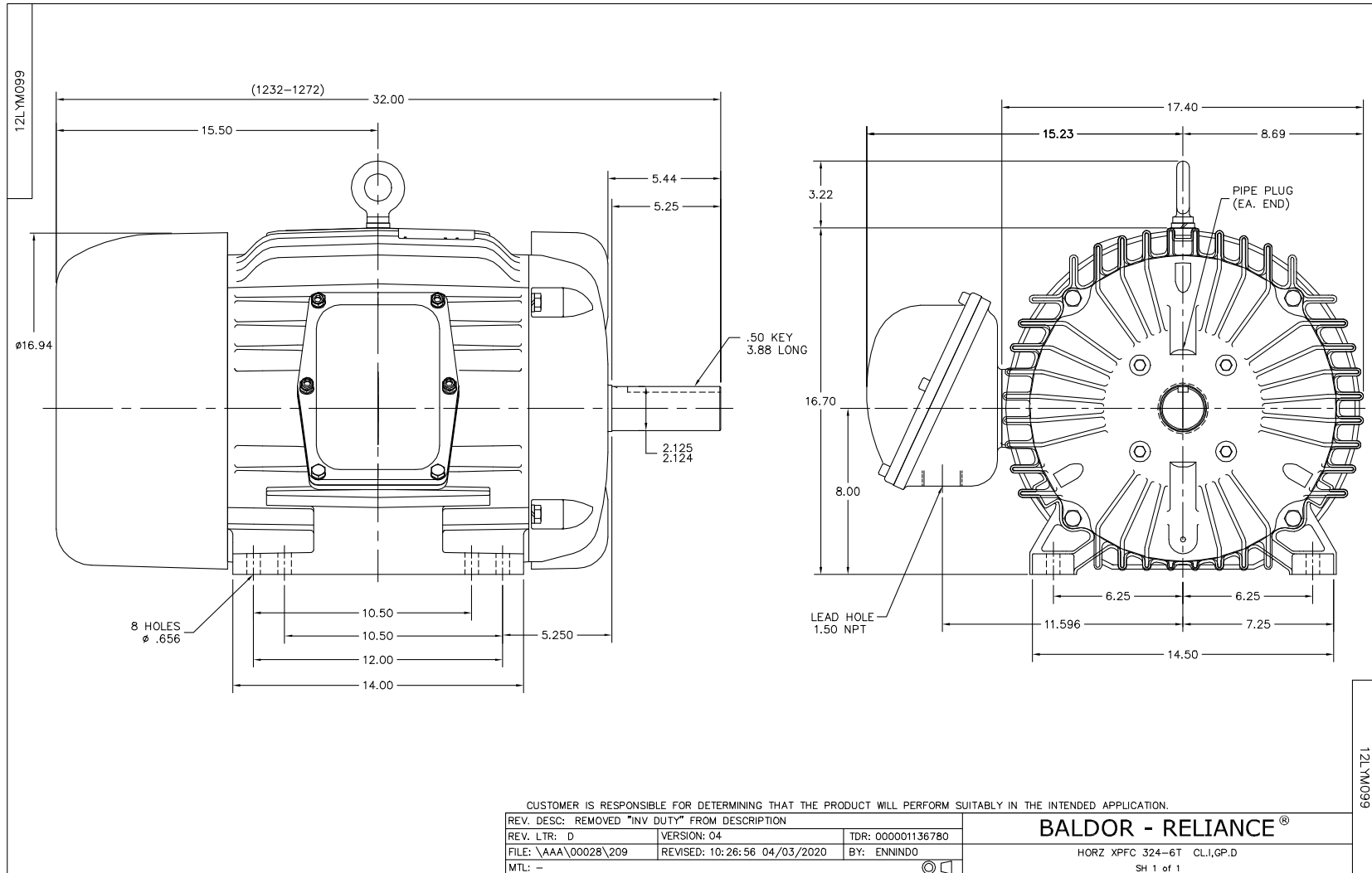
Typical performance - not guaranteed values.

TORQUES (LB-FT): PO=358 PU=187 LR=227 LRA=239

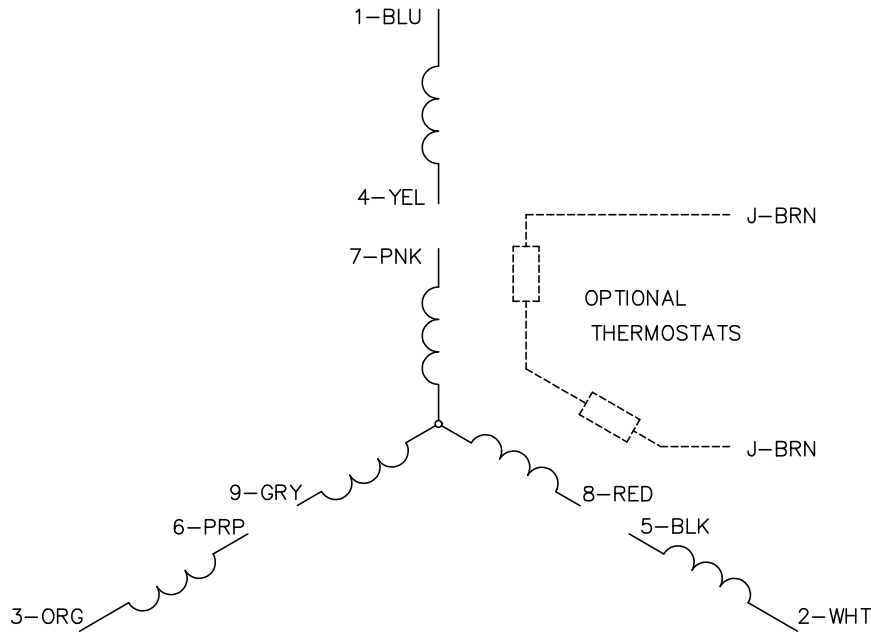


7/26/2023 ACPERF, record # 75682

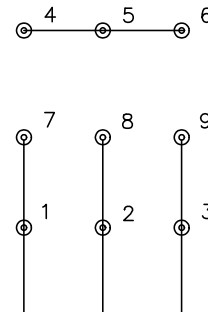




CD0005

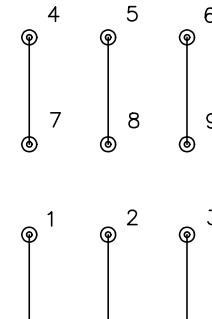


LOW VOLTAGE
(2Y)



LINE

HIGH VOLTAGE
(1Y)



LINE

NOTES:

1. INTERCHANGE ANY TWO LINE LEADS TO REVERSE ROTATION.
2. OPTIONAL THERMOSTATS ARE PROVIDED WHEN SPECIFIED.
3. ACTUAL NUMBER OF INTERNAL PARALLEL CIRCUITS MAY BE A MULTIPLE OF THOSE SHOWN ABOVE.
4. LEAD COLORS ARE OPTIONAL. LEADS MUST ALWAYS BE NUMBERED AS SHOWN.

REV. DESC: REVISE TO SHOW OPTIONAL COLORS			
REV. LTR: E	BY: JLP	REVISED: 01/19/99 10:15	TDR: 0171435
S00000		FILE: AAA00005140	MDL: -
		MTL: -	

BALDOR ELECTRIC Co.

3PH, DV, 9 LEADS

CD0005